

Output CA Ø23  
 SM1 Thread  $\nabla 4.5$  for  
 1" or 25mm protective windows  
 up to 2mm thickness  
 (SM1RR retaining ring necessary)

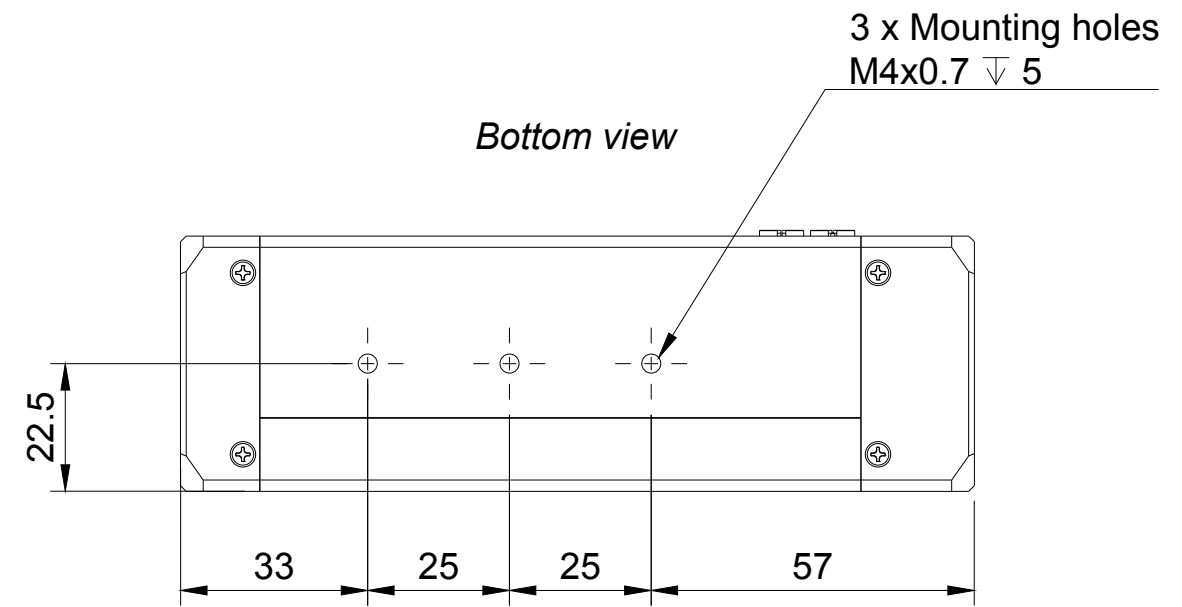
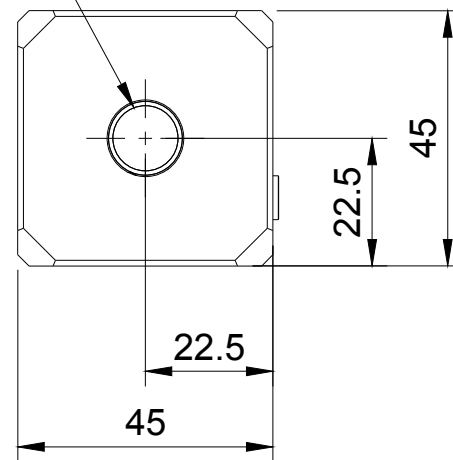
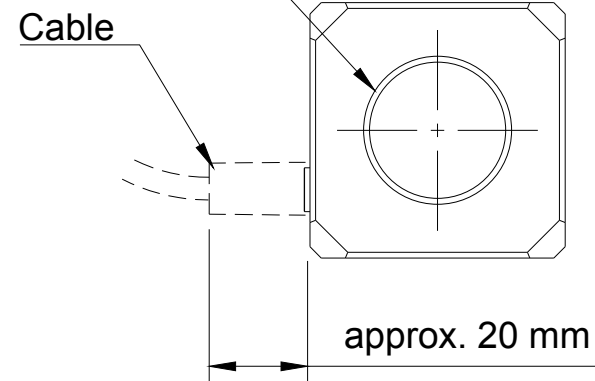
Input CA Ø11.5  
 SM05 Thread  $\nabla 3.5$  for  
 1/2" or 12mm protective windows  
 up to 2mm thickness  
 (SM05RR retaining ring necessary)

3 x Mounting holes  
 M4x0.7  $\nabla 5$

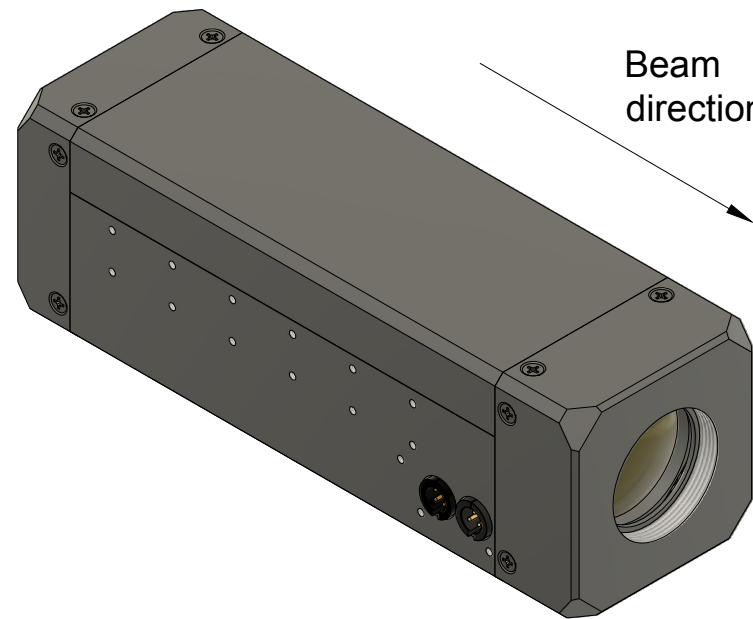
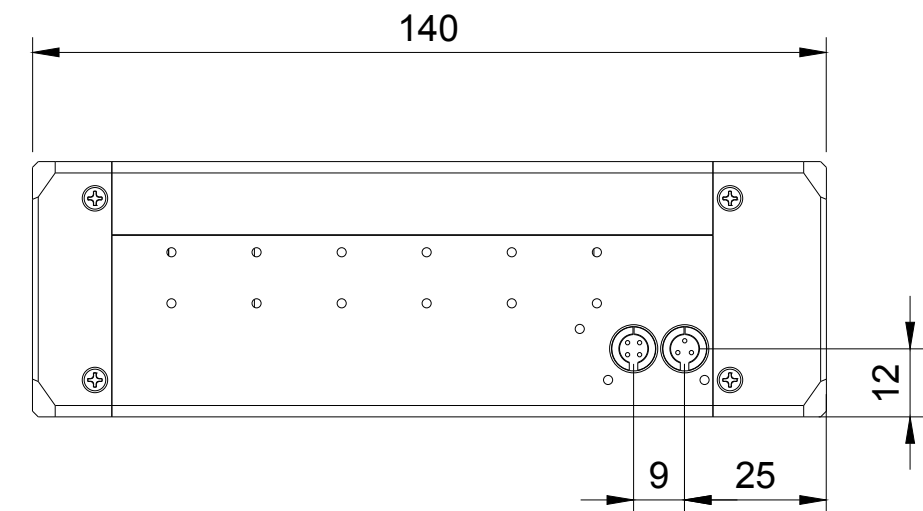
Output view

Input view

Bottom view



Side view



**NOTE:** Natural anodized aluminium for UV  
 Black anodized aluminium for VIS and NIR

**!** FOR INFORMATION ONLY  
 NOT FOR MANUFACTURING PURPOSES **!**

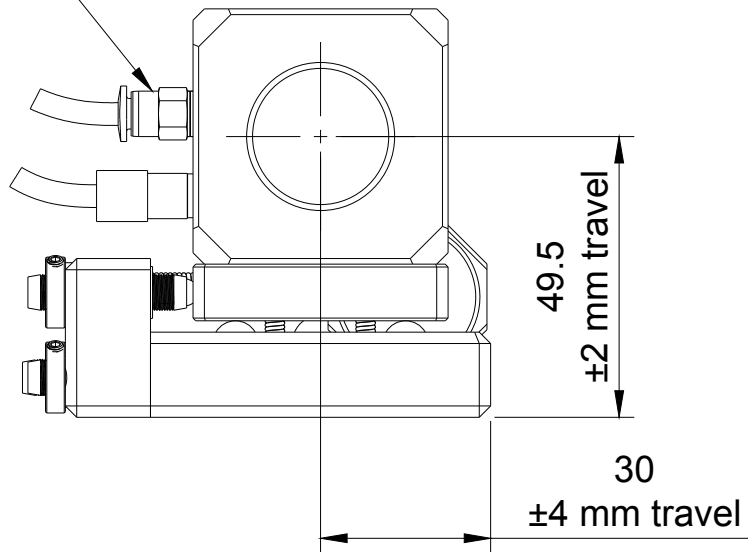
Finish Anodized Aluminium		Created by 2023-06-01	
Title Motorised beam expander MEX13 v2 1.0x - 3.0x		DWG No. MEX13v2.3	
Scale 3:4	A3	Sheet 1/2	

1 2 3 4 5 6 7 8

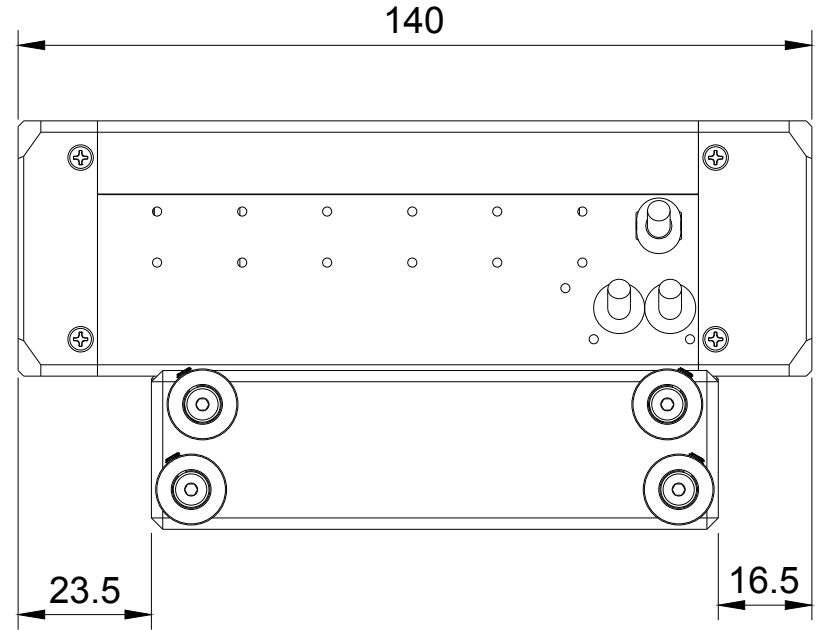
A  
B  
C  
D  
E  
F

Inlet for purging  
UV expander  
(Natural anodized or RAW)  
M5x0.8

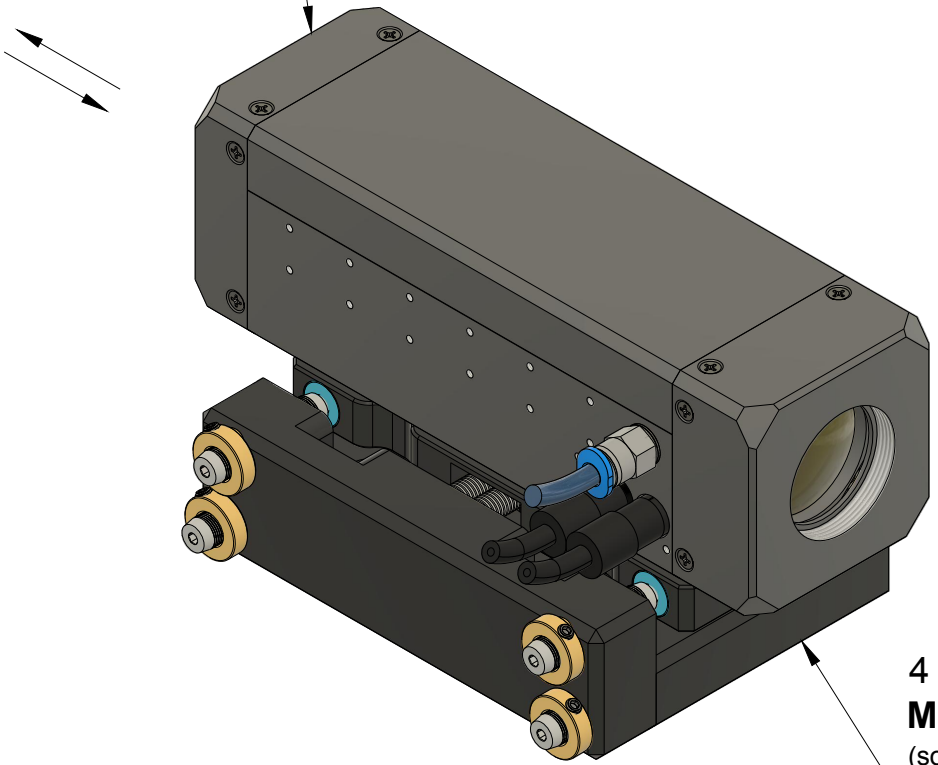
Front view



Side view

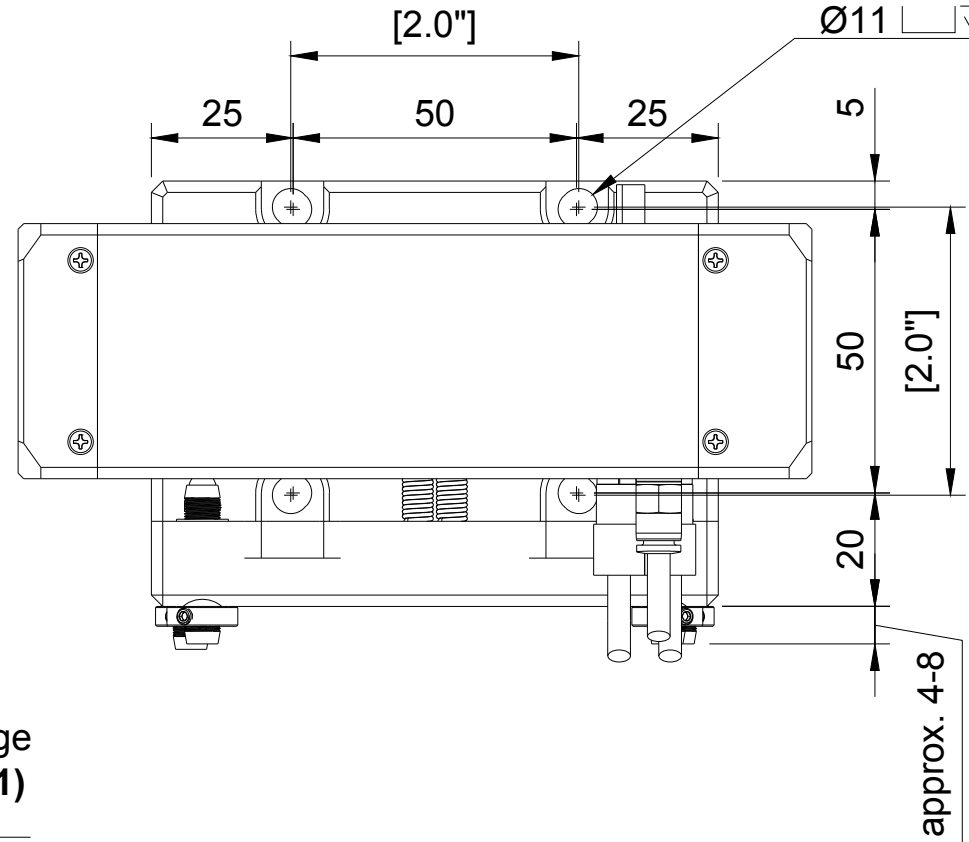


**NOTE:** Motorised expander  
can be mounted in  
both directions



4 axis translation stage  
**MSTAGE (SKU12571)**  
(sold separately)

Top view



4 x Slots for Stage fixing  
(fits M6x1.0 or 1/4"-20 screws)  
6.5 THRU  
Ø11  $\square$  7

**!** FOR INFORMATION ONLY  
NOT FOR MANUFACTURING PURPOSES **!**



Finish Anodized Aluminium	Created by Optogama	2023-06-01
Title Motorised beam expander MEX13 v2 1.0x - 3.0x	DWG No. MEX13v2.3	
Scale 3:4	A3	Sheet 2/2

1 2 3 4 5 6 7 8